

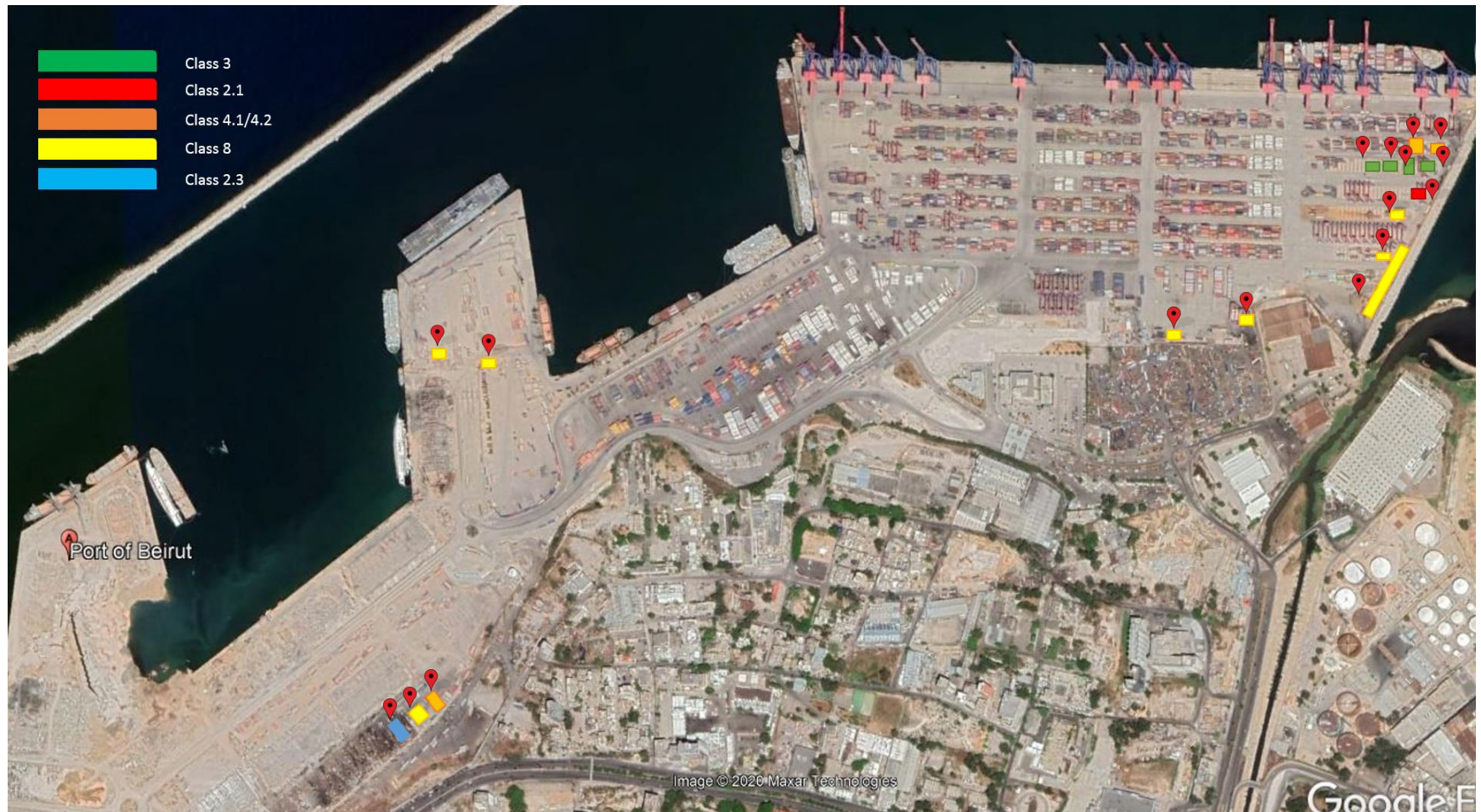


HAZARDOUS LONGSTANDING CONTAINERS

List of 49 containers at Beirut Port

Port Layout Hazardous containers distribution

- Segregation and isolation for the longstanding hazardous containers was done as much as possible by BCTC.
- Beirut Fire Brigade and Lebanese Army - Engineering Regiment have been invited to check the isolation and segregation.



MIXED IMDG CLASSES CONTAINER (2.1- FLAMMABLE GAS, 3-FLAMMABLE LIQUID, 8-CORROSIVE SUBSTANCES)									
No.	Container ID	Line	IMDG Class	IMDG Description	UN #	UN# Description	Location	Category	Discharge Date
1	SUDU8700355	HBS	2.1	Flammable gas	1950	Aerosols, flammable, n.o.s. (engine starting fluid) (each not exceeding 1 L capacity)	CT Yard	IMPORT	11/12/2013
			3	Flammable Liquid	1993	Flammable liquid, N.O.5. (2-Propanol)			
			8	Corrosive substances	1823	Sodium Hydroxide, solid			
			8	Corrosive substances	1824	Sodium Hydroxide solution (fat solver)			
			8	Corrosive substances	3267	Corrosive liquid basic, organi, N.O.S. (Methyglycinn N-diessignsaeure NA3-Salt)			

Container ID: SUDU8700355



CLASS 2.1: FLAMMABLE GAS CONTAINER									
No.	Container ID	Line	IMDG Class	IMDG Description	UN #	UN# Description	Location	Category	Discharge Date
2	MSKU1291858	SGL	2.1	Flammable gas	1950	Aerosols, flammable, n.o.s. (engine starting fluid) (each not exceeding 1 L capacity)	CT Yard	IMPORT	1/3/2017

Container ID: MSKU1291858



Class 2.3: Toxic Gases Container									
No.	Container ID	Line	IMDG Class	IMDG Description	UN #	UN# Description	Location	Category	Discharge Date
3	HLXU2103247	HLL	2.3	Toxic gases	1062	Methyl bromide with not more than 2% chloropicrine	CI Area	IMPORT	8/12/2011

Container ID: HLXU2103247



Class 3: Flammable Liquid Containers									
No.	Container ID	Line	IMDG Class	IMDG Description	UN #	UN# Description	Location	Category	Discharge Date
4	ECMU1597182	CM A	3	Flammable Liquid	1090	Acetone	CT Yard	IMPORT	10/27/2016
5	ECMU9608154	CM A	3	Flammable Liquid	1263	Paint including paint, lacquer, enamel, stain, shellac solutions, varnish, polish, liquid filler and liquid lacquer base	CT Yard	IMPORT	10/9/2011
6	TGHU3534753	CM A	3	Flammable Liquid	1090	Acetone	CT Yard	IMPORT	10/27/2016

Container ID: TGHU3534753



Container ID: ECMU1597182



Container ID: ECMU9608154



Class 3: Flammable Liquid Containers

No.	Container ID	Line	IMDG Class	IMDG Description	UN #	UN# Description	Location	Category	Discharge Date
7	CMBU2362295	MSK	3	Flammable Liquid	1263	Paint including paint, lacquer, enamel, stain, shellac solutions, varnish, polish, liquid filler and liquid lacquer base	CT Yard	IMPORT	11/10/2013
8	MRKU6591959	MSK	3	Flammable Liquid	1263	Paint including paint, lacquer, enamel, stain, shellac solutions, varnish, polish, liquid filler and liquid lacquer base	CT Yard	IMPORT	11/3/2013
9	MRKU7590561	MSK	3	Flammable Liquid	1263	Paint including paint, lacquer, enamel, stain, shellac solutions, varnish, polish, liquid filler and liquid lacquer base	CT Yard	IMPORT	11/3/2013
10	MSKU2409884	MSK	3	Flammable Liquid	1263	Paint including paint, lacquer, enamel, stain, shellac solutions, varnish, polish, liquid filler and liquid lacquer base	CT Yard	IMPORT	11/3/2013
11	PONU0551333	MSK	3	Flammable Liquid	1263	Paint including paint, lacquer, enamel, stain, shellac solutions, varnish, polish, liquid filler and liquid lacquer base	CT Yard	IMPORT	11/3/2013

Container ID: CMBU2362295



Container ID: MRKU6591959



Container ID: MRKU7590561



Container ID: MSKU2409884 and PONU0551333



Class 4.1: Flammable solids, self-reactive substances and desensitized explosives Containers									
No.	Container ID	Line	IMDG Class	IMDG Description	UN #	UN# Description	Location	Category	Discharge Date
12	TTNU9823820	MSC	4.1	Flammable solids, self-reactive substances and desensitized explosives	1944	Matches, safety (book, card or strike on box)	CI Area	IMPORT	4/29/2010

Container ID: TTNU9823820



Class 4.2: Substances liable to spontaneous combustion Containers

No.	Container ID	Line	IMDG Class	IMDG Description	UN #	UN# Description	Location	Category	Discharge Date
13	UETU5355427	LOT	4.2	Substances liable to spontaneous combustion	1361	Carbon, animal or vegetable origin Charcoal	CT Yard	IMPORT	10/25/2016

Container ID: UETU5355427



Class 4.2: Substances liable to spontaneous combustion Containers

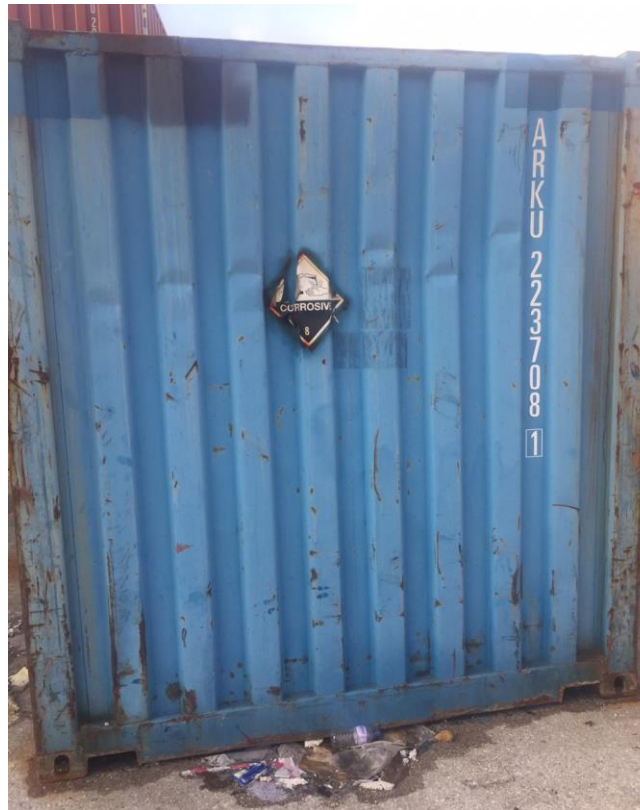
No.	Container ID	Line	IMDG Class	IMDG Description	UN #	UN# Description	Location	Category	Discharge Date
14	DFSU6878867	MSC	4.2	Substances liable to spontaneous combustion	1361	Carbon, animal or vegetable origin Charcoal	CT Yard	IMPORT	5/8/2013
15	MEDU8304738	MSC	4.2	Substances liable to spontaneous combustion	1361	Carbon, animal or vegetable origin Charcoal	CT Yard	IMPORT	5/8/2013

Container ID: DFSU6878867 and MEDU8304738



Class 8: Corrosive substances Containers									
No.	Container ID	Line	IMDG Class	IMDG Description	UN #	UN# Description	Location	Category	Discharge Date
16	ARKU2237081	ARK	8	Corrosive substances	2796	Battery fluid, acid, Sulfuric acid with not more than 51% acid	CI Area	IMPORT	8/14/2016

Container ID: ARKU2237081



Class 8: Corrosive substances Containers

No.	Container ID	Line	IMD G Class	IMDG Description	UN #	UN# Description	Location	Category	Discharge Date
17	XXXX149972	CMA	8	Corrosive substances	1830	Sulfuric acid with more than 51 percent acid	Quay 12	IMPORT	4/13/2009
18	XXXX400411	CMA	8	Corrosive substances	1830	Sulfuric acid with more than 51 percent acid	CT Yard	IMPORT	4/13/2009

Container ID: XXXX149972



Container ID: XXXX400411



Class 8: Corrosive substances Containers									
No.	Container ID	Line	IMDG Class	IMDG Description	UN #	UN# Description	Location	Category	Discharge Date
19	LMCU0454409	COR	8	Corrosive substances	1789	Hydrochloric acid, Muriatic acid	CT Yard	IMPORT	4/26/2014
20	LMCU1115349	COR	8	Corrosive substances	1789	Hydrochloric acid, Muriatic acid	CT Yard	IMPORT	4/26/2014
21	LMCU1213474	COR	8	Corrosive substances	1789	Hydrochloric acid, Muriatic acid	CT Yard	IMPORT	4/26/2014
22	LMCU4006130	COR	8	Corrosive substances	1789	Hydrochloric acid, Muriatic acid	CT Yard	IMPORT	4/26/2014
23	LMCU4007796	COR	8	Corrosive substances	1789	Hydrochloric acid, Muriatic acid	CT Yard	IMPORT	4/26/2014

Container ID: LMCU0454409



Container ID: LMCU1115349



Container ID: LMCU1213474



Container ID: LMCU4006130



Container ID: LMCU4007796



Class 8: Corrosive substances Containers									
No.	Container ID	Line	IMDG Class	IMDG Description	UN #	UN# Description	Location	Category	Discharge Date
24	HASU1022926	HBS	8	Corrosive substances	1789	Hydrochloric acid, Muriatic acid	CT Yard	IMPORT	3/4/2014
25	HASU1044273	HBS	8	Corrosive substances	1789	Hydrochloric acid, Muriatic acid	CT Yard	IMPORT	3/4/2014
26	HASU1127655	HBS	8	Corrosive substances	1789	Hydrochloric acid, Muriatic acid	CT Yard	IMPORT	3/4/2014
27	HASU1138644	HBS	8	Corrosive substances	1789	Hydrochloric acid, Muriatic acid	CT Yard	IMPORT	3/4/2014
28	SUDU1430561	HBS	8	Corrosive substances	1789	Hydrochloric acid, Muriatic acid	CT Yard	IMPORT	3/4/2014
29	SUDU1493301	HBS	8	Corrosive substances	1789	Hydrochloric acid, Muriatic acid	CT Yard	IMPORT	3/4/2014
30	SUDU1608118	HBS	8	Corrosive substances	1789	Hydrochloric acid, Muriatic acid	CT Yard	IMPORT	3/4/2014
31	SUDU3920526	HBS	8	Corrosive substances	1789	Hydrochloric acid, Muriatic acid	CT Yard	IMPORT	3/4/2014
32	SUDU7323405	HBS	8	Corrosive substances	1789	Hydrochloric acid, Muriatic acid	CT Yard	IMPORT	3/4/2014
33	SUDU7545629	HBS	8	Corrosive substances	1789	Hydrochloric acid, Muriatic acid	CT Yard	IMPORT	3/4/2014
34	SUDU7745458	HBS	8	Corrosive substances	1789	Hydrochloric acid, Muriatic acid	CT Yard	IMPORT	3/4/2014
35	SUDU7837940	HBS	8	Corrosive substances	1789	Hydrochloric acid, Muriatic acid	CT Yard	IMPORT	3/4/2014

Container ID: SUDU1608118



Container ID: SUDU3920526



Container ID: SUDU7323405



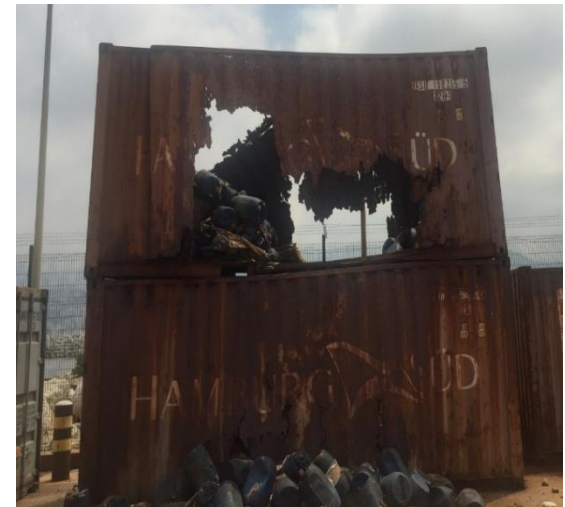
Container ID: SUDU7545629



Container ID: SUDU7745458



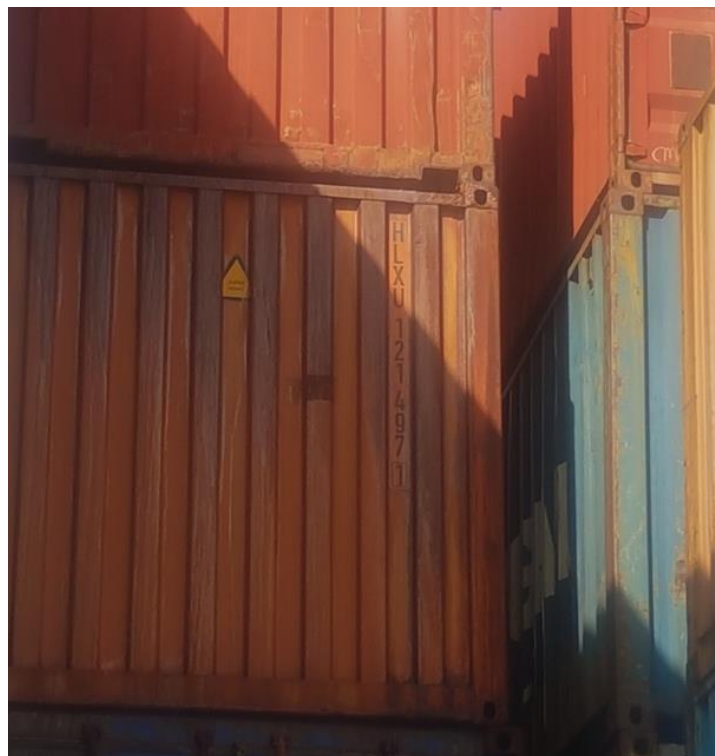
Container ID: SUDU7837940



Class 8: Corrosive Substances Containers

No.	Container ID	Line	IMDG Class	IMDG Description	UN #	UN# Description	Location	Category	Discharge Date
36	HLXU1214971	HLL	8	Corrosive substances	1789	Hydrochloric acid, Muriatic acid	CT Yard	IMPORT	9/13/2013

Container ID: HLXU1214971



Class 8: Corrosive substances Containers

No.	Container ID	Line	IMDG Class	IMDG Description	UN #	UN# Description	Location	Category	Discharge Date
37	CARU3527734	MSC	8	Corrosive substances	1830	Sulfuric acid with more than 51 percent acid	Quay 12	IMPORT	9/5/2014
38	IPXU3980064	MSC	8	Corrosive substances	2794	Batteries, wet, filled with acid, electric storage	CT Yard	IMPORT	5/10/2014

Container ID: CARU3527734



Container ID: IPXU3980064



Class 8: Corrosive substances Containers

No.	Container ID	Line	IMD G Clas s	IMDG Description	UN #	UN# Description	Location	Category	Discharge Date
39	MRSU0173213	MSK	8	Corrosive substances	1789	Hydrochloric acid, Muriatic acid	CT Yard	EXPORT	11/9/2016
40	MSKU2388776	MSK	8	Corrosive substances	1789	Hydrochloric acid, Muriatic acid	CT Yard	EXPORT	11/12/2016
41	MSKU2605423	MSK	8	Corrosive substances	1789	Hydrochloric acid, Muriatic acid	CT Yard	EXPORT	11/12/2016
42	PONU0229728	SGL	8	Corrosive substances	1789	Hydrochloric acid, Muriatic acid	CT Yard	EXPORT	11/15/2016
43	TEMU2277833	SGL	8	Corrosive substances	1789	Hydrochloric acid, Muriatic acid	CT Yard	EXPORT	11/15/2016
44	MRKU8629077	SGL	8	Corrosive substances	1789	Hydrochloric acid, Muriatic acid	CT Yard	EXPORT	11/15/2016
45	MSKU3140188	SGL	8	Corrosive substances	1789	Hydrochloric acid, Muriatic acid	CT Yard	EXPORT	11/15/2016
46	MSKU4173925	SGL	8	Corrosive substances	1789	Hydrochloric acid, Muriatic acid	CT Yard	EXPORT	11/15/2016
47	MRKU8162819	SGL	8	Corrosive substances	1789	Hydrochloric acid, Muriatic acid	CT Yard	EXPORT	8/24/2015
48	MRSU0096652	SGL	8	Corrosive substances	1789	Hydrochloric acid, Muriatic acid	CT Yard	EXPORT	8/24/2015
49	MSKU7571141	SGL	8	Corrosive substances	1789	Hydrochloric acid, Muriatic acid	CT Yard	EXPORT	8/24/2015

Co Container ID: PONU0229728



Container ID: TEMU2277833



Container ID: MRKU8629077



Container ID: MRSU0173213



Container ID: MSKU2388776



Container ID: MSKU260542



Container ID: MSKU3140188



Container ID: MSKU4173925



Container ID: MRKU8162819



Container ID: MRSU0096652



Container ID: MSKU7571141

